



## UPCOMING DATES AND EVENTS

- JUNE 5** ▪ National Trails Day ▪ 10 am – 2 pm ▪ Meet in Brighton Resort Parking Lot to help with clean-up on hills and trails ▪ Incentive: Lunch discount at Brighton Store! Bring water bottles, leather gloves, mask ▪ Partnerships: CCF, Brighton Institute, Brighton Resort ▪ Sign up & liability required...please contact [erika@brightonresort.com](mailto:erika@brightonresort.com)
- JUNE 7** ▪ Last day to Declare Candidacy for 2021 Elections in Brighton Municipal Election  
[MUNICIPAL GENERAL ELECTION - Candidate Filing Begins Today! June 1 to June 7, 2021 | Brighton Utah](#)
- JUNE 8** ▪ Brighton Town Council Meeting ▪ 6:30 PM ▪ Zoom  
Zoom Link, Agenda, and Meeting Packet: <https://www.brighton.utah.gov/meetings>
- JUNE 9** ▪ Deadline for MSD Strategic Plan Survey. It's quick. It's important.  
<https://survey123.arcgis.com/share/24989259ae464509a039ad3af7759160>
- JUNE 14** ▪ BCCA Meeting ▪ 7PM ▪ Zoom  
Zoom Link, Agenda, and Meeting Packet: <http://www.bigcottonwood.org/bcca.html>
- JUNE 28** ▪ Camp Brighton for kids begins.
- JUNE 6** ▪ Big Cottonwood Canyon Flea Market ▪ Sundays ▪ 10 am- 5 pm ▪ Brighton Parking Lot
- JULY 3** ▪ Third of July Breakfast and Parade ▪ 8-10 am Breakfast ▪ 10:30 Parade
- JULY 10-11** ▪ Wasatch Wildflower Festival at Brighton (July 10) and Solitude (July 11)
- JULY 26** ▪ Chipper Days Begin ▪ There's still time to plan a family landscape party to get ready!  
[http://users.neo.registeredsite.com/4/4/6/22978644/assets/Chipper\\_Days\\_Article44740.pdf](http://users.neo.registeredsite.com/4/4/6/22978644/assets/Chipper_Days_Article44740.pdf)



G R E A T E R   S A L T   L A K E

# Municipal Services District

*The MSD's mission is to provide quality, innovative and cost-effective municipal services to meet the present and future needs of the distinct communities we serve.*

## MSD Strategic Plan Survey

<https://survey123.arcgis.com/share/24989259ae464509a039ad3af7759160>



### **BRIGHTON PLANNING COMMISSION APPOINTED**

At the May Town Council Meeting, seven citizens were tapped to serve on Brighton's first Planning Commission. They will help guide land use decisions and draft Brighton's first ever General Plan with help from the MSD (Municipal Services District) planners. They will seek public input during the year-long effort, so stay tuned to see how you can help. Those appointed to serve on the Commission include: Ulrich Brunhart, Donna Conway, Don Despain, Ben Machlis, and Tom Ward. John Carpenter and Phil Lanouette were appointed as alternates. Don Despain and Ben Machlis will serve as Co-Chairs.



## BRIGHTON FAMILY BREAKFAST & PARADE

### Saturday, July 3, 2021

8-10 am

### OUTDOOR BREAKFAST AT MILLY CHALET

Menu: Breakfast Burrito, milk, chocolate milk, juice, or coffee

Cost: \$5



10:15 am

UPD closes vehicle access to Brighton Loop

Parade Participants gather in **Brighton Chapel Parking Lot**

10:30 am

Parade begins – one time 'round the Loop. Meet back at Chapel Parking Lot

- UPD sirens lead (please NO candy throws-due to excitable kids in road)
- UFA after UPD (please NO candy throws-due to jumpy kids in road)
- UDOT after UFA (please NO candy throws-due to darting kids in road)
- Family Floats & Cars (please NO candy throws-bubbles OK)
- Cyclists follow Floats & Cars
- Walkers follow Cyclists (YES! Candy throws & jumping kids encouraged!)

*Wave, be generous, smile, enjoy greeting your fans!*



*Come Rain or Come Shine...the Tradition Continues!*

## BRIGHTON EMERGENCY OPERATIONS PLAN UPDATE

By Jane Martain, Brighton Emergency Management Planner

The Emergency Booklets and Resident Passes have been given to all Neighborhood Team Members to be distributed throughout the summer months. Please let us know when you are at your Brighton residence and we can get these items delivered to you.

Make sure you are signed up for any emergency notification systems your community offers. Keep your contact information updated with the **Brighton Emergency Management Planner**. Contact information is available at <https://www.brighton.utah.gov/administration/page/emergency-management>

**Remember to practice fire safety this summer. Smokey the Bear reminds us,**

**“Wildfires are any unplanned fires that burn in forests and other wildlands, such as shrub or grass communities. They’re a powerful natural force we must fully understand, and respect, in order to best help control. Nearly **nine out of 10** wildfires nationwide are **caused by humans** and could have been prevented.”**

### In June Resolve to be More Prepared for Unique Family and Pet Needs

Talk with family members to identify your household’s unique needs. Every household is different. Before disaster strikes, talk to your family about your household’s unique needs. Make a list of special items you may need in a disaster.

Here are some examples of things that can create unique needs for your family:

- Infants and young children
- Required, life sustaining, prescription medication (keep a three day supply with you)
- Health-related supplies (For example, diabetics need insulin syringes, alcohol wipes, and glucometer supplies)
- Assistive devices (glasses, canes, etc.)
- Pets



Talk to your family members about what to do in a fire, a medical emergency, or a disaster. Make sure they know where emergency supplies are kept, how (and when) to call 911, and who to call if they can’t reach you in an emergency.

If you or someone in your household has a disability, create an evacuation plan that works for them. People with disabilities are more affected by disaster than others in the community. Accessible services might not be available. Hazards like wildfire, floods, and avalanches can lead to evacuations. If you have a disability and you live in an area where these things can happen, make sure you have an evacuation



plan. Let your **Brighton Emergency Management Planner** and your **Neighborhood Team Member** know if you or someone in your home might need extra assistance in order to evacuate.

Pets are important members of the family too. They need to be included in family emergency planning. To prepare for the unexpected follow these tips with your pets in mind:

**Make a Plan-** If you have a plan in place for you and your pets, you will likely encounter less difficulty, stress and worry when you need to make a decision during an emergency. Include the following in your plan:

- Have an evacuation plan for your pet. Often public shelters and hotels do not allow pets.
- Develop a buddy system. Plan with neighbors, friends or relatives to make sure that someone is available to care for or evacuate your pets if you are unable to do so.
- Have your pet microchipped.

**Build a Kit-** Just as you do with your family's emergency supply kit, think first about the basics for survival, such as food and water. Here are some items you may want to include in an emergency kit for your pet:

- Food. Keep several days supply of food in an airtight, waterproof container.
- Water. Store a water bowl and several days supply of water.
- Medicine. Keep an extra supply of the in a waterproof container.
- First aid kit.
- Collar with ID tag and a harness and leash.
- The pet's registration and vaccination information and other relevant documents in a waterproof container and available electronically.
- Traveling bag, crate or sturdy carrier, ideally one for each pet.
- Grooming items.
- Sanitation needs. Include pet litter and litter box (if appropriate), newspapers, paper towels, plastic trash bags and household chlorine bleach to provide for your pet's sanitation needs.
- A picture of you and your pet together.
- Familiar items. Put favorite toys, treats or bedding in your kit.



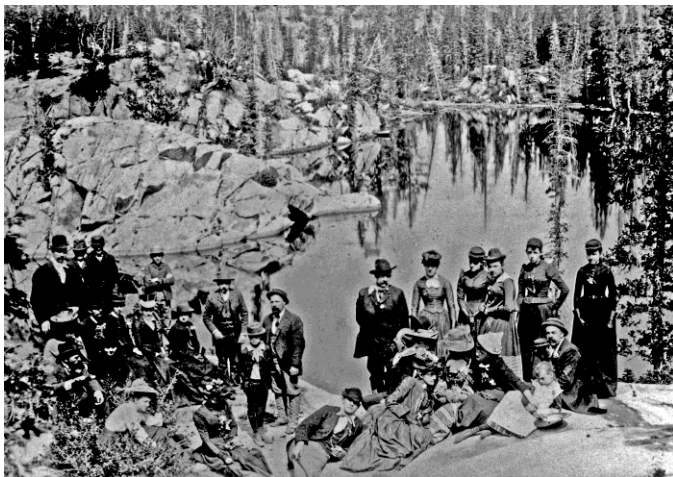
Adapted from Julie Harvey, Municipal Emergency Management Planner and from <https://www.do1thing.com/individuals/unique-family-needs/> and from <https://www.ready.gov/pets>

## On the Road Again

Transportation in the canyon has always been a challenge. Tourism is a natural canyon force just as the wind and the snow...an instinctive search for dignity, peace, and majesty of place. That's why people gladly responded to pioneer William Brighton's little pamphlet telling about the marvels in the mountains around his new hotel.

By the summer of 1891, people from Salt Lake could take the "easy riding stage" to Brighton's Hotel, which took seven hours. It left the Cullen and Walker House every morning at 7:30 am and went up as far as Halfway House at Storm Mountain before lunch. Fare: \$30. "Be sure to bring your flannels and overcoats. You can picnic in the pine forests or wander up the mountain and dine in cloudland," advised the pamphlet. The new Brighton Hotel has fifty light and airy rooms. Room Rate: \$2 each day.

An easier route to Brighton was via the Utah Central Railway train, which left Salt Lake City at 8 a.m. over Parley's summit to Park City, arriving by 10:30 am. Kimball's Stage met the train and took visitors through Scott's Pass, arriving at the Brighton Hotel in time for a lunch of fresh trout, flakey biscuits, and luscious apple pie, courtesy of Catherine Brighton. Roundtrip Rate: \$5. The pamphlet noted that "Brighton is 8,600 ft above the level of the sea, with healthful air, sweetened by the breath of pine and balsam, and water pure as crystal fed by the everlasting snows."



Lake Mary hosts a group of distinguished visitors who arrived via Park City for a mountain retreat in Big Cottonwood Canyon



A Sunday drive along Big Cottonwood Creek in the 1890's required courage and a great hat.

Around 1915, teamsters crowded into Big Cottonwood with ore wagons pulled by four and six-horse teams. It was reported that more than 100 teams were making daily trips between the mines and valley. Heavy traffic made travel more difficult. The road became two deep ruts, making it doubtful whether any wagon could leave the track to pass another wagon from the opposite direction.

It was proposed that a street car from Holladay to Brighton be installed for passengers and freight. There was also talk about moving the electric train from Emigration Canyon over to Big Cottonwood. Neither the railroad nor the streetcar ever quite made it, because in 1916, a coalition of Salt Lake County, Salt Lake City, and mine owners raised \$30,000 to widen the road, cut down the steepest grades, and rebuild the bridges. The mining companies brought in Knox tractors and trailers capable of hauling 15 tons of ore down canyon, and 2 tons of coal on the trip back up. The Cardiff Fork mine alone shipped over 100 tons each day in its prime. It took 21 gallons of gasoline for the round trip, leaving a different kind of smell in the corridor. Although many people wished for the friendlier smell of horses, the motor revolution had begun...there was no turning back.

So we're on the road again, trying to decide how to handle the growing number of mountain visitors. The little Brighton pamphlet describes the upper canyon "like an oval cup, decorated with emerald and filled to the brim with health and rest for the toilers of the valleys." It's no wonder everyone wants to be here!